

Work Flow

Set-up	<ul style="list-style-type: none"> • <i>time/resource planning</i> • <i>initial analytics</i> • <i>assay establishment</i>
PEG-Screen	<ul style="list-style-type: none"> • <i>established program</i> • <i>selection of lead conjugates</i> • <i>process optimization small</i>
Sample preparation	<ul style="list-style-type: none"> • <i>purification development</i> • <i>preparation of conjugates</i> • <i>release analytics</i>

Purification

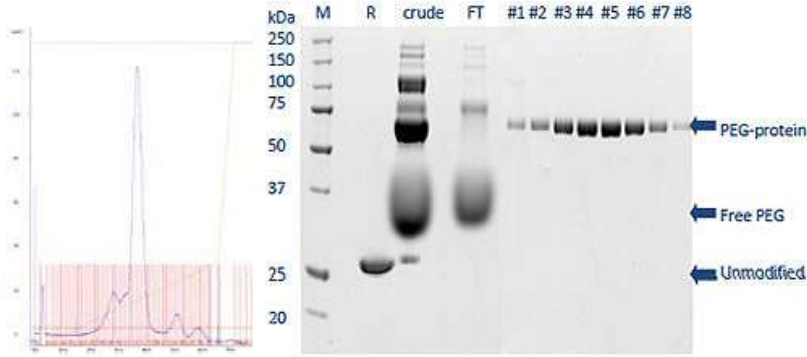


Figure 1: Ion exchange chromatography of crude PEGylated protein

Figure 2: SDS-PAGE of crude conjugate and IEX fractions
M = Marker; R = unmodified protein; FT = Flow

Test Samples

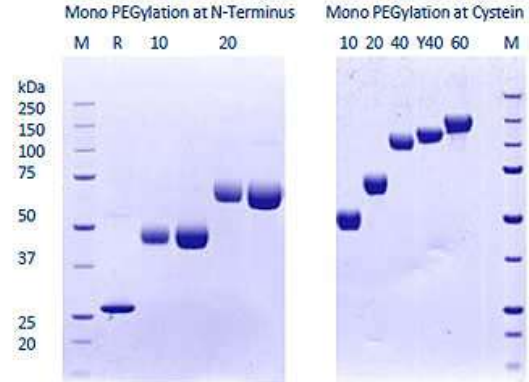


Figure 3: SDS-PAGE of Final PEG-drug conjugates
M = Marker; R= unmodified protein; Numbers indicate MW of PEG in kDa